

TWIN ROCKS

ESTATE WINERY

Private Events



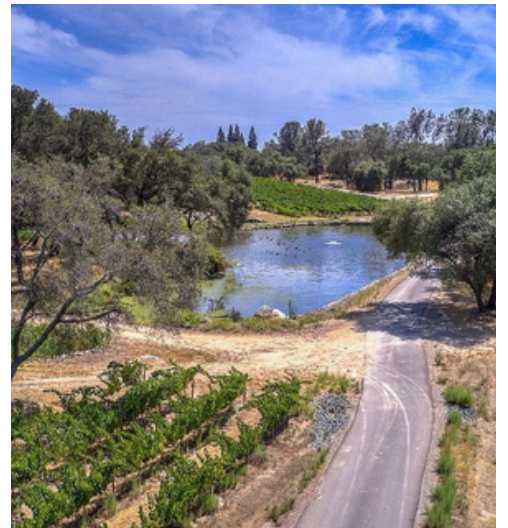
6635 CAVITT STALLMAN ROAD

EVENTS@TWINERY.COM



TWIN ROCKS

ESTATE WINERY



UNCORK THE MAGIC
- WHERE EVERY
EVENT IS AN
UNFORGETTABLE
CELEBRATION!



AT TWIN ROCKS,
WE STRIVE TO CREATE
UNFORGETTABLE
EXPERIENCES, AND WE ARE
DEDICATED TO ENSURING
THAT YOUR GATHERING IS
NOTHING SHORT OF
EXTRAORDINARY.
OUR PICTURESQUE
VINEYARD ESTATE,
STUNNING VIEWS, AND
EXCEPTIONAL SERVICES
PROVIDE THE PERFECT
BACKDROP FOR A TRULY
MAGICAL CELEBRATION.



Every Event is Tailored to Your Unique Occasion

AT TWIN ROCKS, WE CATER TO ALL TYPES OF GATHERINGS ON PROPERTY, INCLUDING:

- BIRTHDAYS
- BABY SHOWERS
- BRIDAL SHOWERS
- WEDDINGS
- CORPORATE RETREATS
- COCKTAIL PARTIES
- ANNIVERSARIES
- CELEBRATION OF LIFE
- FUNDRAISERS
- CLIENT APPRECIATION GATHERINGS



Wine Cave

WINE CAVE

- ANTIQUE BEECHWOOD CROSSBACK CHAIRS
- WINE BARREL ACCENTS
- CONSISTENTLY 65* TEMPERATURE
- INCLUDES USE OF THE WINE CAVE PATIO

CAPACITY

SEATED CEREMONY - 80 GUESTS

BANQUET ROUNDS - 40

BANQUET RECTANGLES - 44

COCKTAIL PARTY - 80





Sierra Foothills Room

INDOOR SIERRA FOOTHILLS ROOM

- 18' CEILINGS
- DESIGNER WALLPAPER WITH MATTE GOLD ACCENT FIXTURES
- VARIETY OF SEATING ARRANGEMENTS
- CREDENZAS FOR DECORATIONS, FOOD, GIFTS OR GAMES
- WINDOWS LOOKING INTO THE PRODUCTION AND BARREL ROOM
- DOUBLE DOORS LEADING TO THE TWIN ROCKS POND

CAPACITY

SEATED CEREMONY - 40 GUESTS

BANQUET RECTANGLES - 38

ONE LONG TABLE - 24



Founders Lounge

INDOOR FOUNDER'S LOUNGE

- RESTORATION HARDWARE COUCHES & COMFORTABLE SOFT SEATING
- WORKING FIREPLACE
- INTIMATE LIBRARY SETTING
- BALCONY WITH WINERY VIEW



CAPACITY
LOUNGE - 10





Tasting Room

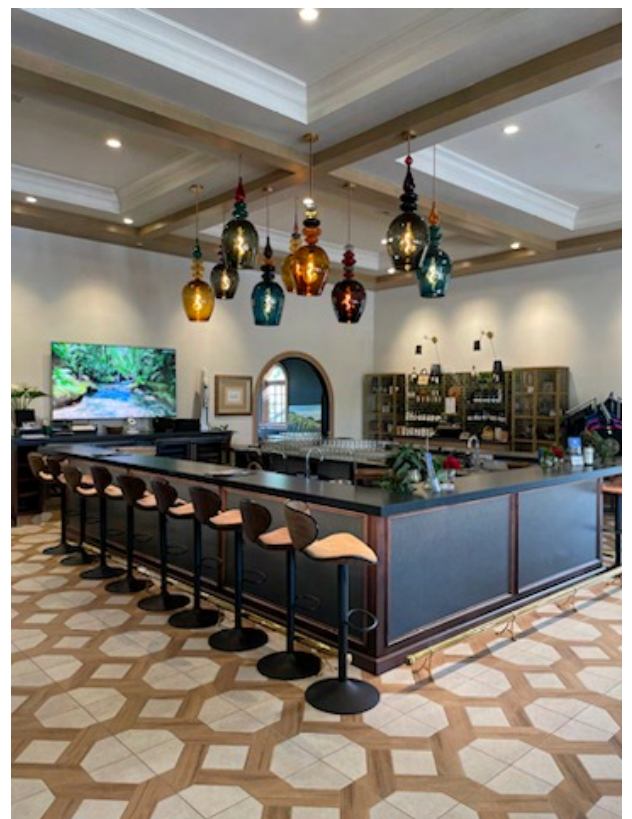
INDOOR TASTING ROOM

- LARGE U-SHAPED BAR
- 18' CEILINGS
- LARGE DANCE / COCKTAIL AREA
- VARIETY OF SEATING ARRANGEMENTS
- RESTORATION HARDWARE COUCHES & COMFORTABLE SOFT SEATING



CAPACITY

SEATED CEREMONY - 80 GUESTS
BANQUET ROUNDS - 60
BANQUET RECTANGLES - 64
COCKTAIL PARTY - 120





Tasting Room Patio



OUTDOOR TASTING ROOM TIERED PATIO

- VARIETY OF PATIO TABLES
- FIRE PITS AND COUCHES
- POND BACKDROP WITH 25'
FOUNTAIN

CAPACITY

SEATED CEREMONY - 200 GUESTS

BANQUET ROUNDS - 200

BANQUET RECTANGLES - 140

COCKTAIL PARTY - 250





Lone Rock Pondside Landing

LONE ROCK PONDSIDE LANDING

- WHITE PADDED CHAIRS
- ROUND OR RECTANGLE TABLES
- WINE BARREL ACCENTS
- SURROUNDED WITH ROSES & COLORFUL PLANTS
- 8,000 SQUARE FOOT LAWN
- POND BACKDROP COMPLETE WITH SWANS

CAPACITY

SEATED CEREMONY - 200 GUESTS
BANQUET ROUNDS - 160
BANQUET RECTANGLES - 140
COCKTAIL PARTY - 200



Combine Event

Spaces for Large Gatherings

Tasting Room +
Sierra Foothills Room

CAPACITY

SEATED CEREMONY - 100 GUESTS

BANQUET RECTANGLES - 110

COCKTAIL PARTY - 180



Tasting Room +
Sierra Foothills Room +
Tasting Room Patio

CAPACITY

SEATED CEREMONY - 200 GUESTS

BANQUET ROUNDS - 200

BANQUET RECTANGLES - 200

COCKTAIL PARTY - 300



Tasting Room +
Sierra Foothills Room +
Wine Cave

CAPACITY

SEATED CEREMONY - 100 GUESTS

BANQUET RECTANGLES - 110

COCKTAIL PARTY - 250

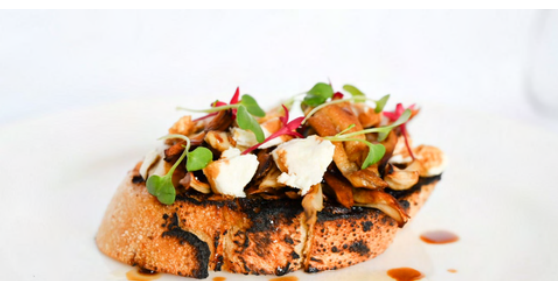


Onsite Catering Services

GREAT FOOD MAKES YOUR EVENT

EVEN MORE MEMORABLE!

WE FAVOR LOCALLY GROWN, SEASONAL MENUS THAT IMPRESS YOUR GUESTS AND PARTNER BEAUTIFULLY WITH OUR WINES. WHETHER IT'S AN APPETIZER PARTY, BUFFET OR A PLATED DINNER, EXCLUSIVELY VEGAN OR VEGETARIAN, EVEN COMPLETELY GLUTEN FREE...WE HAVE OPTIONS FOR YOU.



Event Inclusions

ALLOW US TO TAKE CARE
OF THE SETUP & CLEANUP,
FREEING YOU TO FULLY ENJOY THE MOMENT

AT TWIN ROCKS, WE BELIEVE THAT YOUR EVENT SHOULD BE STRESS-FREE AND ENJOYABLE FOR YOU, JUST AS MUCH AS IT IS FOR YOUR GUESTS. THAT'S WHY WE TAKE CARE OF EVERY DETAIL, INCLUDING SETTING UP YOUR UNIQUE PERSONAL TOUCHES, SO THAT YOU CAN FULLY IMMERSE YOURSELF IN THE EXPERIENCE FROM THE MOMENT YOU ENTER OUR SPACE.



CHINA

WHITE BONE CHINA



SILVERWARE



GLASSWARE

TWIN ROCKS LOGO:

- CHAMPAGNE FLUTES
- WINE GLASSES
- WATER GLASSES



Common Questions

DO YOU HAVE ROOM RENTAL FEES?

WE HAVE ROOM RENTAL FEES + REQUIRED FOOD AND BEVERAGE MINIMUMS ON ALL OUR PRIVATE EVENT SPACES. THE RENTAL FEE IS DETERMINED BY THE LOCATION, DATE AND TIME FRAME OF YOUR EVENT; LET US KNOW ABOUT YOUR EVENT BY SUBMITTING AN EVENT INQUIRY AND WE'LL WORK-UP A COMPREHENSIVE PRELIMINARY QUOTE FOR YOUR CONSIDERATION.

DO YOU ALLOW CHILDREN?

YES! CHILDREN ARE WELCOME TO ATTEND PRIVATE EVENTS AT TWIN ROCKS ESTATE WINERY.

DO YOU OFFER BAR PACKAGES?

ABSOLUTELY. WE OFFER A BEER, WINE AND NON-ALCOHOLIC BEVERAGE PACKAGE; WE EVEN HAVE OPTIONS FOR A SPARKLING GREETING AND CRAFT, WINE-BASED BEVERAGES LIKE SANGRIA AND FROZE.

DO YOU OFFER LIQUOR-BASED DRINKS?

WE DO NOT PERMIT LIQUOR OF ANY KIND TO BE SERVED OR CONSUMED ON PROPERTY; WE OFFER BEER, WINE AND NON-ALCOHOLIC BEVERAGES, EVEN HARD SELTZERS AND HARD KOMBUCHA UPON REQUEST...BUT SORRY, NO LIQUOR.

CAN I BRING IN MY OWN WINE?

IF YOU HAVE A SELECTED ONE OF OUR BEER, WINE & NON-ALCOHOLIC BEVERAGE PACKAGES, YOU ARE PERMITTED TO BRING IN UP TO 2 CASES OF YOUR OWN WINE FOR THE EVENT.

WHAT ARE THE RULES ABOUT AMPLIFIED MUSIC?

YOU ARE WELCOME TO AMPLIFY BACKGROUND MUSIC AND SPEECHES OUTSIDE. ALL LIVELY OR DANCE-LEVEL MUSIC MUST BE CONTAINED WITHIN THE INDOOR TASTING ROOM. NEED HELP FINDING A MUSICIAN - WE HAVE RECOMMENDATIONS FOR YOU!

HOW MUCH PARKING DO YOU HAVE ONSITE?

CURRENTLY WE HAVE PARKING FOR ROUGHLY 120 VEHICLES. IF YOU EXPECT MORE THAN 120 VEHICLES, WE ENCOURAGE YOU TO ARRANGE FOR SHUTTLES, OFFER ONSITE VALET OR RECOMMEND CARPOOLS.

WHEN WOULD YOU REQUIRE A DEPOSIT TO HOLD MY PREFERRED EVENT DATE?

WE REQUIRE A \$1000 NON-REFUNDABLE DEPOSIT ALONG WITH A SIGNED EVENT CONTRACT TO RESERVE YOUR DATE. DUE TO THE POPULARITY OF TWIN ROCKS ESTATE WINERY, WE ARE NOT ABLE TO HOLD ANY EVENT DATES WITHOUT A DEPOSIT AND A SIGNED EVENT CONTRACT.



Common Questions

DO YOU PROVIDE CATERING ONSITE?

WE DO! TWIN ROCKS ESTATE WINERY IS A FULL-SERVICE SITE WHERE FOOD AND BEVERAGE CAN BE CATERED THROUGH A PARTNERSHIP WITH OUR IN-HOUSE CATERING COMPANY. WE HAVE ELEVATED APPETIZERS, BUFFET AND PLATED DINNER OPTIONS, INCLUDING A VARIETY OF VEGAN, VEGETARIAN AND GLUTEN FREE MENU OFFERINGS TO SELECT FROM.

DO YOU ALLOW OUTSIDE CATERERS?

SHOULD YOUR GROUP REQUEST A SPECIALTY CATERER, FOOD TRUCK OR REQUIRE A RESTRICTIVE MENU DUE TO RELIGIOUS OR ETHNIC REASONS AND OUR FACILITY CANNOT MEET THOSE EXPECTATIONS, OUTSIDE CATERING IS PERMITTED.

- A \$500 CHARGE PER 50 GUESTS 'OUTSIDE CATERING FEE' + 20% SERVICE FEE WILL BE INCURRED.
- OUTSIDE CATERERS WILL BE REQUIRED TO PROVIDE THEIR OWN SERVICE SUPPLIES AND HOT BOXES.
- POWER, WATER AND A COVERED CATERING PREPARATION SPACE WILL BE PROVIDED TO THE CATERER AS WILL EASY DRIVE-UP ACCESS ON OUR LOADING DOCK.
- A WAIVER MUST BE PROVIDED BY THE OUTSIDE CATERER HOLDING TWIN ROCKS ESTATE WINERY HARMLESS AGAINST ANY FOOD BORNE ILLNESS CONCERNS AND ANY INJURY THAT OCCURS WHILE ONSITE.
- PROOF OF INSURANCE MUST BE PROVIDED BY THE OUTSIDE CATERER.

WHAT INFORMATION DO YOU REQUIRE MY VENDORS TO PROVIDE?

ALL VENDORS ARE REQUIRED TO PROVIDE:

- A SIGNED VENDER AGREEMENT WAIVER HOLDING TWIN ROCKS ESTATE WINERY HARMLESS AGAINST ANY INJURY THAT OCCURS WHILE ONSITE.
- PROOF OF INSURANCE FOR NO LESS THAN \$1,000,000 IN COVERAGE MUST BE PROVIDED BY THE OUTSIDE VENDOR.

WHEN CAN I DROP OFF MY EVENT DECOR?

WE WILL ACCEPT YOUR EVENT DECOR THE DAY BEFORE YOUR CELEBRATION.
WE'LL PLACE ALL OF YOUR GOODIES OUT THE DAY OF YOUR GATHERING

CAN WE HAVE LIVE FLAME CANDLES?

WHILE WE LOVE THE LOOK OF A REAL FLAME CANDLE, THE SAFETY OF OUR WINERY AND THE GRANITE BAY COMMUNITY MUST BE PRIORITIZED. WE DO NOT ALLOW ANY LIVE FLAME CANDLES ONSITE; LUCKILY, NOW THERE ARE SOME FANTASTIC ARTIFICIAL FLAME CANDLES ON THE MARKET WHERE YOU CAN'T EVEN TELL THE DIFFERENCE AND THEY STAND UP TO A BREEZE FAR BETTER THAN A REAL CANDLE.





HERE'S TO A MEMORABLE CELEBRATION

